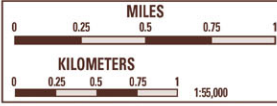
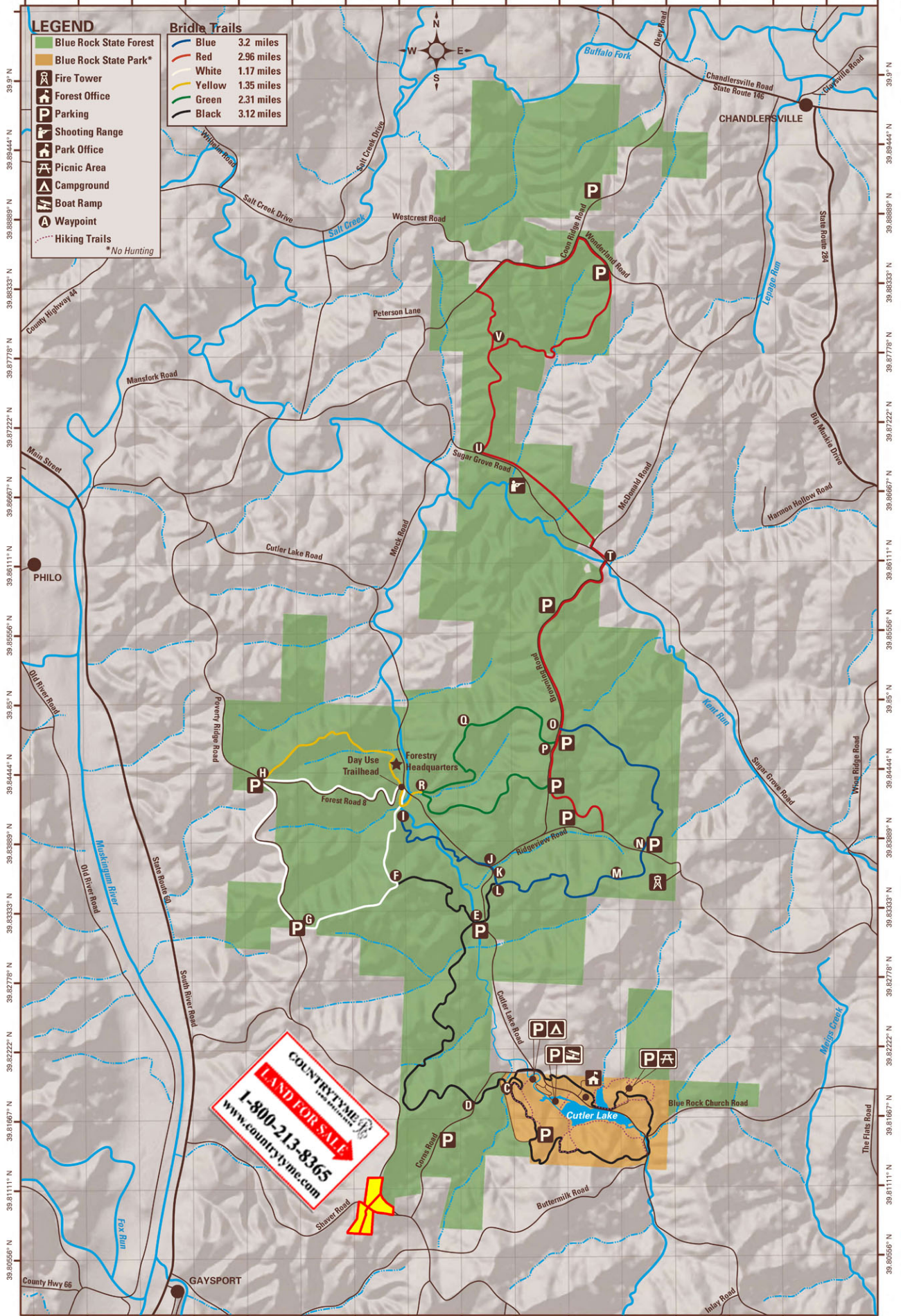


BLUE ROCK STATE FOREST



State forest boundaries shown are representative and believed to be correct but not warranted. State forest boundary lines on the ground are identified with signs and/or yellow paint marks on trees.
 Map reviewed and approved by Dan Balsler, Chief, ODNR Division of Forestry, 06/2019.
 Data provided by ODNR Forestry, ODNR GIMS, US Census Tiger, ODOT.

81.90556° W 81.9° W 81.89444° W 81.88889° W 81.88333° W 81.87778° W 81.87222° W 81.86667° W 81.86111° W 81.85556° W 81.85° W 81.84444° W 81.83889° W 81.83333° W 81.82778° W 81.82222° W 81.81667° W 81.81111° W 81.80556° W



COUNTRYTIME
LAND FOR SALE
 1-800-213-8365
www.countrytime.com

81.90556° W 81.9° W 81.89444° W 81.88889° W 81.88333° W 81.87778° W 81.87222° W 81.86667° W 81.86111° W 81.85556° W 81.85° W 81.84444° W 81.83889° W 81.83333° W 81.82778° W 81.82222° W